

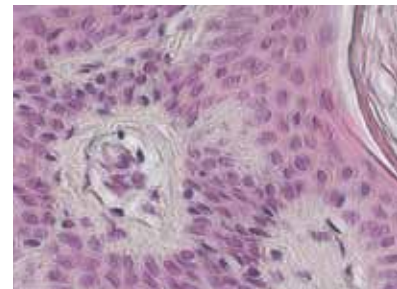
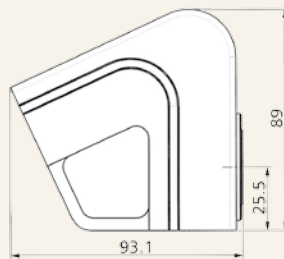
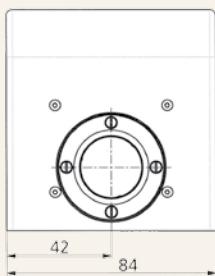


ProgRes[®] CT3

CMOS Camera

Image sensor	1/2" CMOS	Voltage supply	FireWire powered
Color / Monochrome	Color	Power consumption	approx. 2.5 W
Sensor resolution [max]	2048 x 1536 pixel [3.15 Mpix]	Ambient conditions	Temperature: +5 °C ... +35 °C, Humidity: 5 % ... 80 %, non condensing
Active sensor size [H x V]	6.55 mm x 4.92 mm	Storage conditions	Temperature: -10 °C ... +50 °C
Pixel size [W x H]	3.2 µm x 3.2 µm	Dimensions [L x W x H]	89 mm x 84 mm x 93 mm
A / D conversion	10 bit	Weight	approx. 700 g
Pixel clock	36 MHz	Application software	ProgRes [®] CapturePro for PC/ MAC (TWAIN for PC only)
Dynamic range	58 dB	SDK	ProgRes [®] SDK for PC, LINUX, MAC
Exposure times	50 µs ... 3 s	External camera driver	available at: www.jenoptik.com/progres
Analog gain	1x ... 20x (SDK)	Hardware requirements	PC: MS WIN XP/ Vista /WIN 7 Mac: OS X 10.4 or higher, 3 GHz CPU, 1 GB RAM, 256 MB graphics, FireWire a, Multicore recommended
Max. frame rate [image size]	10 fps [2048 x 1536 pixel] 26 fps [1024 x 768 pixel]		
Image resolution	Binning: 2x, 3x		
Cooling	no		
Digital interface	FireWire a		
Optical connection	C-Mount (0.5x or 0.63x TV pref., depends from the type of microscope)		
Trigger In / Out	no		

It is our policy to constantly improve the design and specifications. Accordingly, the details represented herein cannot be regarded as final and binding.



017953-301-99-14-0813-en

JENOPTIK | Optical Systems
 Optoelectronic Systems Business Unit
 JENOPTIK Optical Systems GmbH
 Goeschwitzer Strasse 25 | 07745 Jena | Germany
 Phone +49 3641 65-3083 | Fax -2144
progres.os@jenoptik.com | www.jenoptik.com/progres

Office USA:
 JENOPTIK Optical Systems, Inc.
 16490 Innovation Drive | Jupiter, FL 33478-6428 | USA
 Phone +1 561 628-8837

Optoelectronic Systems